

bizcare

ISSUE 2 . 2020 / 2021





A STEP IN THE RIGHT DIRECTION

We're committed to designing and manufacturing ethical and sustainable health care attire. At the core of our business is a long-standing commitment to ethical trading. We believe that businesses can be both profitable and responsible.

At Biz Care, we like to think of ourselves as masters of the tiniest details. From sourcing fabrics, to ensuring all our health wear designs are rigorously tested in dedicated laboratories and trialled on real workers to make sure we get the functionality just right. Biz Care garments have been designed to easily coordinate with the Biz Collection range to ensure everything works perfectly together and provide a complete uniform solution.

Innovative quality is at the heart of all we do

Our elite team of designers, researchers and technicians are dedicated to sourcing innovative fabrics and processes. Before we release any new product, we perform rigorous testing and evaluation, both in-house and in the workplace.

Our garments are fitted on real people, not mannequins, and we conduct wear trials with customers in the field to guarantee they're fit for purpose, comfort and durability.

More choices for everybody

We're the first to recognise that one size doesn't fit all, that's why we offer a vast range of styles and fabrics to suit all body shapes, industries and functional needs.

Great care has been taken to create products that can be mixed and matched, allowing each wearer to bring their individuality to work while still being part of a team.

First impressions that last

It's no secret that uniforms are an extension of your brand's image. A good looking uniform not only elevates your brand but also fosters increased morale and productivity. All our stylish pieces have been developed to adhere to and enhance uniform guidelines, providing management with peace of mind.

Delivering on our promise of care

With a team of local staff in most states and at the ready to take your call, customer service is a natural extension of everything we do. And our library of fit ranges in some states, is available to help you effortlessly conduct fittings and borrow samples easily and efficiently.

Because we hold stock in multiple warehouses across Australia and New Zealand, we can ensure your orders are processed, picked and dispatched quickly and efficiently.

We believe in corporate social responsibility

We're proud of our parent company, Fashion Biz's commitment to sourcing products and services in an ethically responsible manner. We consider the welfare of workers, health and safety and potential environmental impacts.

Our Ethical Sourcing Policy is primarily based on conducting business ethically, manufacturing responsibly and demonstrating environmental consciousness.

We choose our partners carefully with factories across India, China and Bangladesh, who must adhere to international manufacturing standards, these may include:



Ethical Trade Initiative Base Code (ETI)



Ethically Correct Certified Company SA 8000



Business Social Compliance Initiative (BSCI)



Supplier Ethical Data Exchange (Sedex) ETI/SMETA



Worldwide Responsible Accredited Production (WRAP)

We're making it a priority to change our product life cycle for the better. That means growing a better future for both our customers and the planet.

02. Team Dressing

18. Shirts and T-Tops

26. Lowers

34. Scrubs

49. Polos

50. Health and Beauty

52. Knitwear and Outerwear

56. Size Guide



PURPLE MAGIC

Modern and eye catching, our purple adds richness and depth to your wardrobe without being overly vivid. Try pairing with navy, charcoal, black or white.

FEATURED - LEFT TO RIGHT 1. **NEW** CS950LS Purple Daisy Print Florence Tunic, **NEW** CL040LL Black Jane 3/4 Length Stretch Pant
2. **NEW** CS947LS Purple Florence S/S Shirt, CL956LS Black Comfort Waist Cargo Skirt 3. **NEW** CST043MS Purple Riley V-Neck Stretch Scrub Top,
NEW CSP047ML Purple Riley Straight Leg Scrub Pant 4. **NEW** CST043LS Purple Riley V-Neck Stretch Scrub Top, **NEW** CSP047LL Purple Riley Straight Leg Scrub Pant

CLASSIC NAVY

Navy is a staple colour in any health wardrobe. Best worn with black or navy lowers. Match with other bright colours to create your own contrasting wardrobe options.

FEATURED - LEFT TO RIGHT 1. S770MS Ink Monaco S/S shirt, CL959ML Navy Comfort Waist Cargo Pant

2. CS947LS Navy Florence S/S Sleeve Shirt, CL953LL Navy Comfort Waist Slim Leg Pant 3. CS949LS Navy Florence Tunic, CL956LS Navy Comfort Waist Cargo Skirt

4. CS949LS Navy Florence Tunic, CL955LL Navy Comfort Waist Straight Leg Pant 5. **NEW** CST043MS Midnight Navy Riley V-Neck Stretch Scrub Top, **NEW** CSP042ML Midnight Navy Riley Slim Leg Jogger Scrub Pant 7. **NEW** CST043LS Midnight Navy Riley V-Neck Stretch Scrub Top, **NEW** CSP042LL Midnight Navy Riley Slim Leg Jogger Scrub Pant





TEAL TIME

Add vibrancy and modern flair to your wardrobe with Teal. Teal matches well with navy, black or charcoal in both lowers and outerwear. Mix and match with our Florence Daisy Print to brighten up your outfit.

FEATURED - LEFT TO RIGHT 1. SH3603 Teal Oasis S/S Shirt, CL958ML Charcoal Comfort Waist Flat Front Pant
2. CK962LC Charcoal Zip Front S/S Knit, CS948LS Teal Daisy Print Florence S/S Sleeve Shirt, CL954LL Charcoal Comfort Waist Cargo Pant
3. CS950LS Teal Daisy Print Florence Tunic, CL953LL Charcoal Comfort Waist Slim Leg Pant 4. P400LS Teal Crew Polo, CL956LS Charcoal Comfort Waist Cargo Skirt

EVERY DAY MID BLUE

Mid Blue is a staple in team dressing, and allows your business logo to stand out against the soft blue hue.

Match with black or navy lowers and outerwear. For depth, add a secondary colour palette of white, electric blue or navy that's sure to turn heads.

FEATURED - LEFT TO RIGHT 1. SH3603 Mid Blue Oasis S/S Shirt, CL958ML Navy Comfort Waist Straight Leg Pant

2. **NEW** CS951LT Mid Blue Florence 3/4 Sleeve Shirt, **NEW** CK045LC Navy Button Front Cardigan, CL956LS Navy Comfort Waist Cargo Skirt

3. **NEW** CS947LS Mid Blue Florence S/S Shirt, **NEW** CL040LL Navy Jane 3/4 Length Stretch Pant 4. **NEW** CS949LS Mid Blue Florence Tunic, **NEW** CL041LL Navy Jane Stretch Pant





EARTHY CHARCOAL

A colour that will go with everything in your wardrobe and complement any skin tone. Drawing its tonal inspiration from the minerals of the earth, add depth to charcoal with contrasting colours of blue, purple or white.

- FEATURED - LEFT TO RIGHT**
1. CS947LS Charcoal Florence S/S Sleeve Shirt, CL956LS Black Comfort Waist Cargo Skirt
 2. CS952LS Charcoal Marley Jersey S/S T-Top, CL953LL Black Comfort Waist Slim Leg Pant
 3. P400LS Charcoal Crew Polo, CL953LL Black Comfort Waist Slim Leg Pant
 4. **NEW** CST945MS Charcoal Avery V-Neck Scrub Top, **NEW** CSP946ML Charcoal Avery Multi-Pocket Scrub Pant
 5. **NEW** CST941LS Charcoal Avery V-Neck Scrub Top, **NEW** CSP944LL Charcoal Avery Multi-Pocket Straight Leg Scrub Pant

ELECTRIC BLUE

Give your wardrobe a recharge with electric blue. Pair with navy, charcoal and black suiting and outerwear for a striking look. And give depth to your range with our tailored monochrome shirts and polos.

FEATURED - LEFT TO RIGHT 1. CS952LS Electric Blue Marley Jersey S/S T-Top, CL956LS Charcoal Comfort Waist Cargo Skirt
2. CS949LS Electric Blue Florence Tunic, CL953LL Charcoal Comfort Waist Slim Leg Pant 3. CK961LV Charcoal Button Front Knit Vest, CS947LS Electric Blue Florence S/S Sleeve Shirt, CL953LL Charcoal Comfort Waist Slim Leg Pant 4. CST945MS Electric Blue Avery V-Neck Scrub Top, CSP946ML Electric Blue Avery Multi-Pocket Scrub Pant
5. CST942LS Electric Blue Avery Round Neck Tailored Fit Scrub Top, CSP944LL Electric Blue Avery Multi-Pocket Straight Leg Scrub Pant





BLOSSOM WITH CHERRY

Add extra-refreshing energy and life to your wardrobe with pops of colour. Match with black or navy lowers and outerwear. For depth, add a secondary colour palette of white, blue and black that's sure to turn heads.

FEATURED - LEFT TO RIGHT 1. P400LS Red Crew Polo, CL957LS Black Comfort Waist Cargo Short 2. P400MS Red Crew Polo, CL960MS Black Comfort Waist Cargo Short
3. CS949LS Cherry Florence Tunic, CL954LL Black Comfort Waist Cargo Pant 4. CS951LT Cherry Florence 3/4 Sleeve Shirt, CL953LL Black Comfort Waist Slim Leg Pant
5. CS947LS Cherry Florence S/S Sleeve Shirt, CL955LL Black Comfort Waist Straight Leg Pant

LIMITLESS BLACK

Black is a staple in any working wardrobe. Biz Care blacks have been tested to ensure colorfastness is the least of your worries.

Mix and match with bright colours to create your own contrasting wardrobe options.

FEATURED - LEFT TO RIGHT 1. CST942LS Black Avery Round Neck Tailored Fit Scrub Top, CSP943LL Black Avery Slim Leg Scrub Pant 2. CST941LS Black Avery V-Neck Scrub Top, CSP943LL Black Avery Slim Leg Scrub Pant 3. **NEW** CS952LS Black Marley Jersey S/S T-Top, CL956LS Black Comfort Waist Cargo Skirt 4. P400MS Black Crew Polo, CL959ML Black Comfort Waist Cargo Pant 5. **NEW** CS949LS Black Florence Plain S/S Tunic, **NEW** CL041LL Navy Jane Stretch Pant



FLORENCE STRETCH TOPS



BREATHABLE

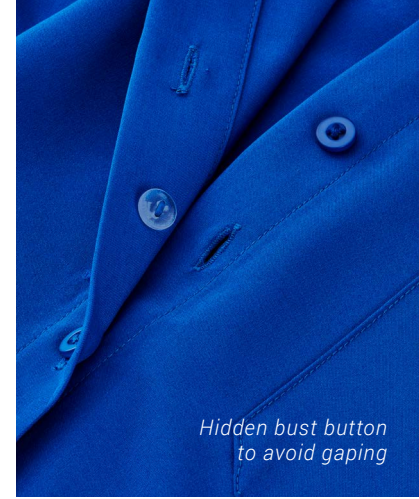
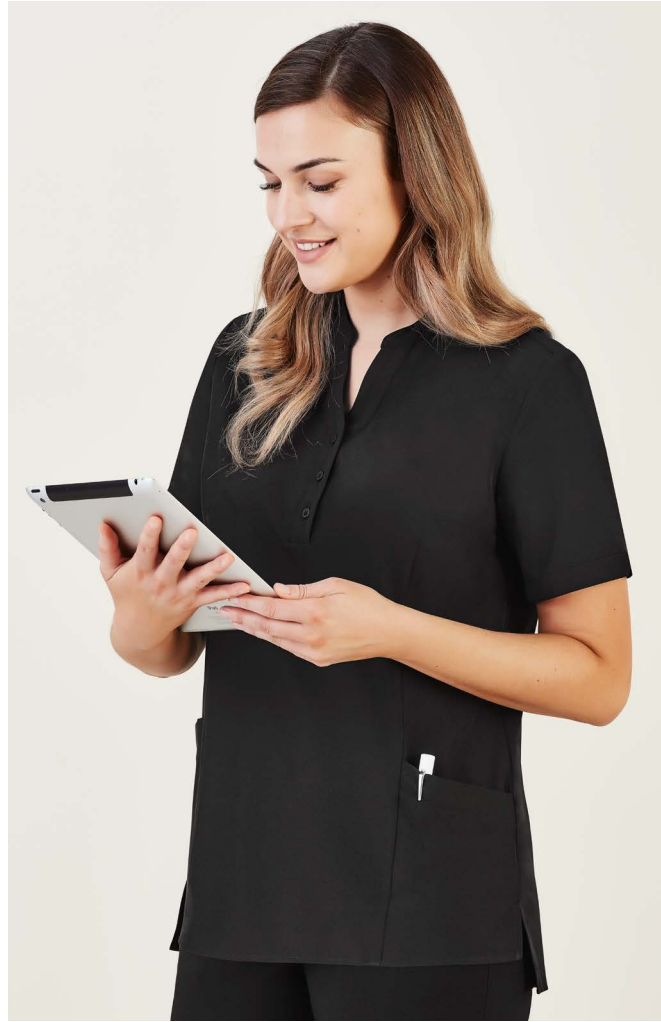


EASY
STRETCH



LIGHT
WEIGHT





- NAVY
- ELECTRIC BLUE
- MID BLUE NEW
- TEAL
- CHERRY
- CHARCOAL
- BLACK NEW
- PURPLE NEW

A perfect blend of style, comfort and function. The easy care fabric is breathable, soft and lightweight; perfect for all climates. Styles feature longer hem lengths, hidden bust button (short sleeve and ¾ sleeve styles), side splits and pockets.

FABRIC COMPOSITION
CARE INSTRUCTIONS

94% Polyester 6% Elastane
Gentle machine wash. Wash inside out with similar colours.
Do not bleach, soak or tumble dry. Line dry in shade.



CS947LS
Womens
S/S Shirt
4 - 30



CS949LS
Womens
Tunic
4 - 30



CS951LT
Womens
3/4 Shirt
4 - 30



FLORENCE
DAISY PRINT
STRETCH
TOPS



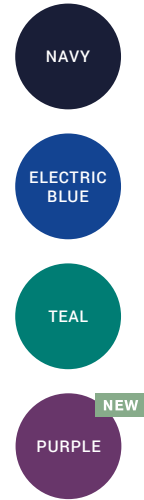
BREATHABLE



EASY
STRETCH



LIGHT
WEIGHT



A perfect blend of style, comfort and function. The easy care fabric is breathable, soft and lightweight; perfect for all climates. Styles feature longer hem lengths, hidden bust button on short sleeve style, side splits and pockets.

FABRIC COMPOSITION
CARE INSTRUCTIONS

94% Polyester 6% Elastane
Gentle machine wash. Wash inside out with similar colours.
Do not bleach, soak or tumble dry. Line dry in shade.



CS948LS
Womens Daisy
Print S/S Shirt
4 - 30



CS950LS
Womens Daisy
Print Tunic
4 - 30

MARLEY JERSEY T-TOPS



BREATHABLE

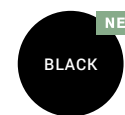


EASY
STRETCH



LIGHT
WEIGHT





Our easy care Jersey T-Top is an essential piece in any working wardrobe. The lightweight soft knit provides stretch and comfort without clinging to the body. Designed to complement all silhouettes.

FABRIC COMPOSITION
CARE INSTRUCTIONS

95% Polyester 5% Elastane

Warm gentle machine wash. Wash with similar colours. Do not bleach, soak or tumble dry. Line dry in shade. Little to no pressing required.



CS952LS
Womens
S/S T-Top
XXS - 4XL



OASIS SHIRTS

Biz Collection Oasis is ideal for demanding work environments. It's soft, durable and requires little to no ironing. Made from yarn wicked breathable polyester, providing the same cool and dry features of linen.

FABRIC COMPOSITION
CARE INSTRUCTIONS

BIZ COMFORTCOOL™ 100% Polyester
Cold gentle machine wash. Do not bleach, soak or tumble dry. Line dry in shade.



LB3601
Womens
S/S Shirt
6 - 26



S265LS*
Womens
Overblouse
6 - 30



LB3600
Womens
3/4 Shirt
6 - 26



SH3603
Mens
S/S Shirt
S - 3XL, 5XL

*Limited colours available. See the full range of styles and colours available in the Biz Collection catalogue.



MONACO SHIRTS

Get that pristine look with this stretch cotton-rich fabric alternative. The Biz Collection Monaco is a functional and comfortable shirt range for demanding healthcare environments.

FABRIC COMPOSITION
CARE INSTRUCTIONS

68% Cotton 28% Polyester 4% Elastane
Cold gentle machine wash. Do not bleach, soak or tumble dry. Line dry in shade.



S770LS
Womens
S/S Shirt
6 - 26



S770LT
Womens
3/4 Shirt
6 - 26



S770MS
Mens
S/S Shirt
XS - 5XL

CARE CARGOS

Designed and developed for care professionals, the Biz Care Cargo Lower are our best selling styles.



BREATHABLE



EASY
STRETCH



LIGHT
WEIGHT



CLEVER
STORAGE





Biz Care Cargos are designed, developed, fitted and tested in Australia and New Zealand by real nurses to ensure our range is comfortable, stylish and fit for purpose.

Biz Care Cargos feature:

- Multiple functional and durable pockets.
- Pockets made from self-fabric to withstand sharp tools. Bar tacked to prevent pocket corners ripping.
- Streamlined pockets provide a clean and tailored appearance, and are less like industrial workwear pockets.
- Roll-up pant leg option provide the flexibility of a 3/4 leg length.
- Durable, hard-wearing soft fabric with added stretch for comfort and movement.
- Comfort stretch waistband that moves with you.



CL953LL Womens Comfort Waist Slim Leg Pant



CL955LL Womens Comfort Waist Straight Leg Pant



CL954LL Womens Comfort Waist Cargo Pant

WOMENS COMFORT WAIST LOWERS

You'll be impressed with the hard wearing, durable, and easy care fabric. Made from a lightweight plain weave fabric, it's breathable and comfortable making it perfect for all climates and care roles.

FABRIC COMPOSITION CARE INSTRUCTIONS

64% Polyester 34% Viscose 2% Elastane

Warm gentle machine wash 40°. Wash inside out with similar colours.
Do not bleach, soak or tumble dry. Line dry in shade. Cool iron if required.



CL956LS Womens Comfort Waist Cargo Skirt



CL957LS Womens Comfort Waist Cargo Short

- NAVY
- CHARCOAL
- BLACK



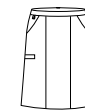
CL953LL
Womens
Slim Leg Pant
4 - 20



CL955LL
Womens
Straight Leg Pant
8 - 30



CL954LL
Womens
Cargo Pant
4 - 30



CL956LS
Womens
Cargo Skirt
4 - 30



CL957LS
Womens
Cargo Short
4 - 26



CL958ML Mens Comfort Waist Flat Front Pant



CL959ML Mens Comfort Waist Cargo Pant



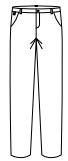
- NAVY
- CHARCOAL
- BLACK

MENS COMFORT WAIST LOWERS

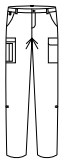
The perfect hard wearing, durable, and easy care fabric. Made from a lightweight plain weave fabric, it's breathable and comfortable making it perfect for all climates and care roles.

FABRIC COMPOSITION
CARE INSTRUCTIONS

64% Polyester 34% Viscose 2% Elastane
Warm gentle machine wash 40°. Wash inside out with similar colours. Do not bleach, soak or tumble dry. Line dry in shade. Cool iron if required.



CL958ML
Mens Flat
Front Pant
72R - 127R



CL959ML
Mens
Cargo Pant
72R - 127R



CL960MS
Mens
Cargo Short
72R - 127R

JANE LOWERS

The perfect pull on stretch pant in a light weight fabric that is durable and comfortable. Suitable for all climates and quick drying. Easy care, wash and wear pant.

Perfect for both functional and office roles.



BREATHABLE



EASY
STRETCH



LIGHT
WEIGHT



QUICK
DRYING





- NEW
NAVY
- NEW
CHARCOAL
- NEW
BLACK

Light weight fabric that is stretchy, durable and comfortable. Wide basque waistband, with anti-roll elastic, no zips or buttons, functional back pocket, and two deep front angled pockets with utility loop on right hand side.

FABRIC COMPOSITION
CARE INSTRUCTIONS

88% Polyester 12% Elastane
Warm gentle machine wash 40°. Wash inside out with similar colours. Do not bleach, soak or tumble dry. Line dry in shade. Cool iron if required.



CL040LL
Womens
3/4 Length
Stretch Pant
4 - 30
Size 28 and 30
available 02/2021



CL041LL
Womens
Stretch
Pant
4 - 30
Size 28 and 30
available 02/2021



RILEY SCRUBS

Inspired by athleisure and expertly designed for medical professionals to take you through the longest of shifts in comfort. Cotton rich fabric that feels incredibly soft against the skin, but durable enough for the demands of healthcare.

Riley scrub tops feature antibacterial side stretch panels, multiple pockets and hidden utility loops to hold all your tools in place.

Riley scrub pants have a stretchy yoga knit waistband and available in a slim leg jogger style and straight leg style to suit all body types.



HOT
WASH



BREATHABLE



EASY
STRETCH



ANTI
ODOUR



CLEVER
STORAGE



FUNCTIONAL POCKETS

Multiple pockets in the right spots to hold all your tools with bungee loop for keys and utility loops to hold tools in place.

ACTIVE STRETCH PANELS

Antibacterial stretch side panels for comfort and ease of movement. Plus added protection of odour and bacteria control.

YOGA KNIT WAISTBAND

All Riley lowers have a wide stretch waistband for extra comfort. Secured with internal draw string.



JOGGER CUFFS

Designed with comfort in mind, our jogger style hem provides comfort and function in the most active of health roles.

OPPOSITE PAGE - LEFT TO RIGHT

1. CST043LS Womens V-Neck Stretch Scrub Top, CSP047LL Womens Straight Leg Scrub Pant
2. CST043MS Mens V-Neck Stretch Scrub Top, CSP042ML Mens Slim Leg Jogger Scrub Pant





FEATURED

1. CST043LS V-Neck Stretch Scrub Top
CSP047LL Straight Leg Scrub Pant
2. CST043LS V-Neck Stretch Scrub Top
CSP042LL Slim Leg Jogger Scrub Pant



RILEY WOMENS

Cotton Rich fabric, for breathability and soft hand feel. Scrub tops have antibacterial stretch side panels to provide ease of movement through the waist and arms.

Pants have a Navy knit waistband and draw string for extra comfort and security.

Jogger pants have dyed to match knit hem cuff.

FABRIC COMPOSITION

Main: 52% Cotton 45% Polyester 3% Elastane
Stretch panels: 88% Polyester 12% Elastane, with antibacterial treatment.

CARE INSTRUCTIONS

Can be washed at 60°C. Do not bleach or soak. Tumble dry on low. Line dry in shade. Dry cleanable. Cool iron body only.



CST043LS
Womens V-Neck Stretch Scrub Top
XXS - 3XL



CSP042LL
Womens Slim Leg Jogger Scrub Pant
XXS - 3XL



CSP047LL
Womens Straight Leg Scrub Pant
XXS - 3XL

Available in Midnight Navy and Electric Blue only





FEATURED

1. CST043MS V-Neck Stretch Scrub Top
CSP042ML Slim Leg Jogger Scrub Pant
2. CST043MS V-Neck Stretch Scrub Top
CSP047ML Straight Leg Scrub Pant

RILEY MENS

Cotton Rich fabric, for breathability and soft hand feel. Scrub tops have antibacterial stretch side panels to provide ease of movement through the waist and arms.

Pants have a Navy knit waistband and draw string for extra comfort and security.

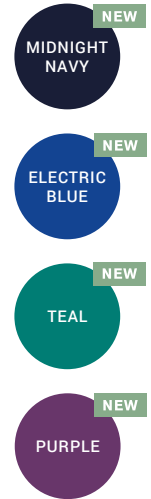
Jogger pants have dyed to match knit hem cuff.

FABRIC COMPOSITION

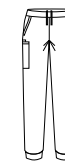
Main: 52% Cotton 45% Polyester 3% Elastane
Stretch panels: 88% Polyester 12% Elastane, with antibacterial treatment.

CARE INSTRUCTIONS

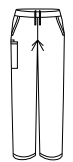
Can be washed at 60°C. Do not bleach or soak. Tumble dry on low. Line dry in shade. Dry cleanable. Cool iron body only.



CST043MS
Mens V-Neck
Stretch Scrub Top
XS - 5XL



CSP042ML
Mens Slim Leg
Jogger Scrub Pant
XS - 5XL
Available in Midnight
Navy and Electric Blue only



CSP047ML
Mens Straight
Scrub Pant
XS - 5XL



AVERY SCRUBS

Designed in Australia and New Zealand together with medical professionals, these innovative, comfortable and fit for purpose medical scrubs make the perfect throw on and go uniform!

Avery scrubs are designed with attention to detail; functional, responsive, easy care and comfort.

Available in 5 core colours, multiple fits and an extensive range of sizes.



HOT
WASH



BREATHABLE



EASY
STRETCH



MOISTURE
WICKING



LIGHT
WEIGHT



QUICK
DRYING



CLEVER
STORAGE



PET FUR
FRIENDLY



IDENTIFIERS

Optional tabs attach with press studs for easy identification of streams. Available in 8 colors.



CLEVER POCKETS

Pockets positioned to securely hold all your tools with bungee loop for keys.



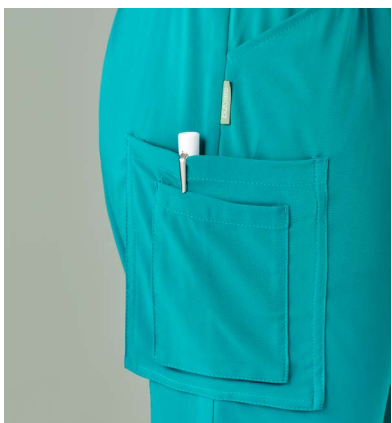
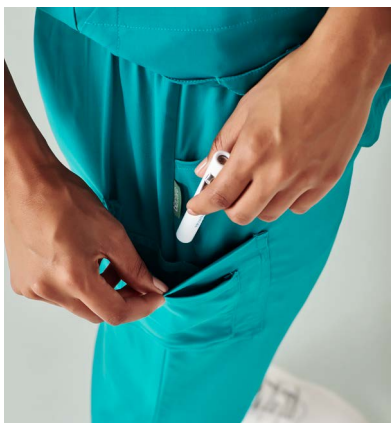
UTILITY LOOPS

Hidden utility loops in both the scrub top and pant to hold your tools in place.



OPPOSITE PAGE - LEFT TO RIGHT

1. CST945MS Mens V-neck Scrub Top, CSP946ML Mens Multi-Pocket Scrub Pant
2. CST942LS Womens Round Neck Tailored Fit Scrub Top, CSP943LL Womens Multi-Pocket Slim Leg Scrub Pant





2.



3.

FEATURED

1. *CST941LS V-Neck Easy Fit Scrub Top*
CSP944LL Multi-Pocket Straight Leg Scrub Pant
2. *Same as above*
3. *CST941LS V-Neck Easy Fit Scrub Top*
CSP943LL Multi-Pocket Slim Leg Scrub Pant

AVERY WOMENS

Easy care, wash and wear performance fabric for the most demanding of environments.

FABRIC COMPOSITION
96% Polyester 4% Elastane

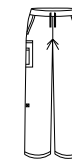
CARE INSTRUCTIONS
Can be washed at 60°C.
Do not bleach, soak or tumble dry. Line dry in shade.



CST941LS
Womens V-Neck Scrub Top
S - 5XL



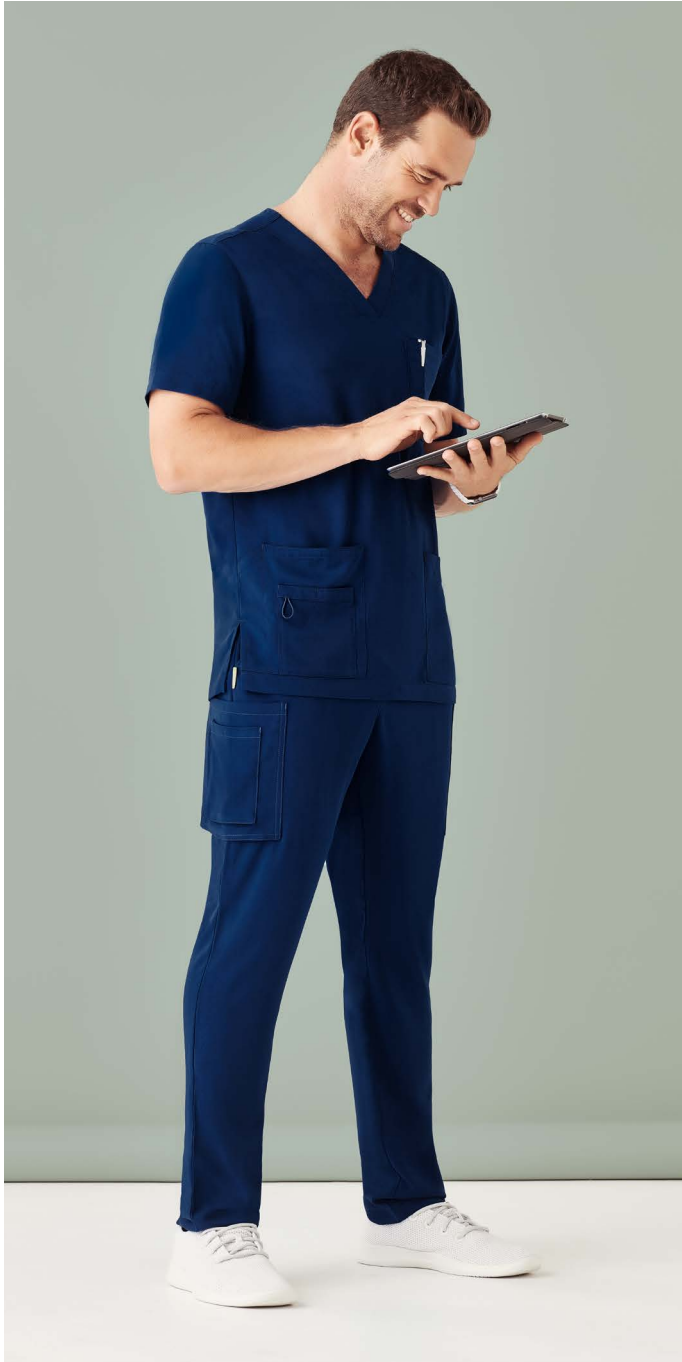
CST942LS
Womens Round Neck Scrub Top
XXS - 3XL



CSP944LL
Womens Straight Leg Scrub Pant
S - 5XL

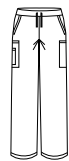


CSP943LL
Womens Slim Leg Scrub Pant
XXS - 3XL





CST945MS
Mens V-Neck
Scrub Top
XS - 5XL



CSP946ML
Mens
Scrub Pant
XS - 5XL

AVERY MENS

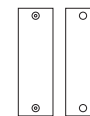
Easy care, wash and wear performance fabric for the most demanding of environments.

FABRIC COMPOSITION

96% Polyester 4% Elastane

CARE INSTRUCTIONS

Can be washed at 60°C. Do not bleach, soak or tumble dry. Line dry in shade.



CID940U
Scrub Identifier
One Size

AVERY IDENTIFIERS

Identifiers are the perfect way to differentiate streams and job roles without having the team in different coloured scrubs. Identifiers easily snap onto the hidden press studs on the scrub sleeve. A small monogram is also possible on the identifier.

FABRIC COMPOSITION

96% Polyester 4% Elastane with metal press studs

CLASSIC BIZ SCRUBS™

Biz Collection scrubs are made from high performance, soft touch fabric with mechanical stretch.

FABRIC COMPOSITION

65% Polyester 35% Cotton

CARE INSTRUCTIONS

Can be laundered at 80°C.
Do not soak, tumble dry on low, warm iron if needed.
Do not dry clean.



BREATHABLE



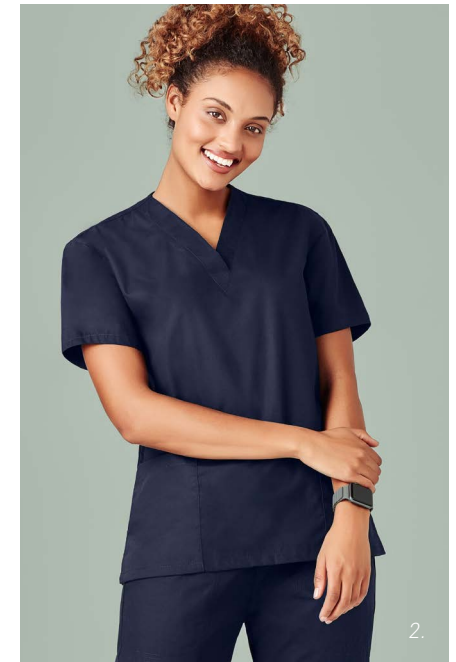
EASY
IRON



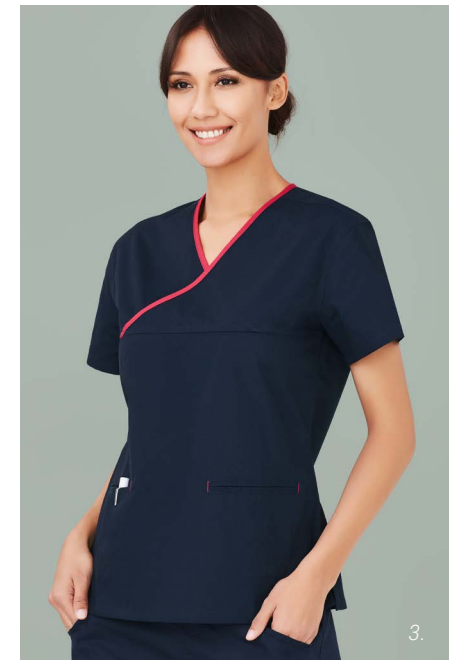
INDUSTRIAL
WASHING



1.



2.



3.



NAVY

ROYAL

MID BLUE

BLACK

HUNTER GREEN

PEWTER

FEATURED

1. H10622 Womens Scrub Top,
H10620 Womens Bootleg Scrub Pant
2. H10622 Womens Scrub Top
3. H10722 Womens Contrast Top
4. H10612 Unisex Scrub Top,
H10610 Unisex Scrub Pant



H10622
Womens Classic
Scrub Top
XS - 3XL



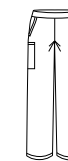
H10722*
Womens Contrast
Crossover Scrub Top
XS - 4XL



H10612
Unisex Classic
Scrub Top
XS - 3XL, 5XL



H10620
Womens Classic
Bootleg Scrub Pant
XXS - 3XL



H10610
Unisex Classic
Scrub Cargo Pant
XS - 3XL, 5XL

*Limited colours available. See the full range of styles and colours available in the Biz Collection catalogue.



WHITE



NEW
NATURAL



UNISEX LAB COAT

Biz Collection unisex lab coats are made from easy care performance fabric in a durable cotton twill. Mechanical stretch to provide extra comfort.



H132ML
Unisex
Lab Coat
XS - 3XL, 5XL

FABRIC COMPOSITION

65% Polyester
35% Cotton Twill

BIZ CARE TOTE

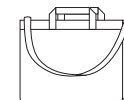
The perfect work bag or shopping tote. Inside pocket, metal clip for keys, removable hard base and attached short and long handles.

FABRIC COMPOSITION

100% Recycled Canvas Cotton

CARE INSTRUCTIONS

Gentle machine or hand wash.
Remove base before washing.



CA044U
Tote Bag
One Size



CREW POLOS

The Biz Collection Crew Polo is easy care and perfect for all health care professionals. Long sleeve mens and ladies styles available in black, navy and charcoal.

FABRIC COMPOSITION

65% Polyester 35% Cotton Pique

CARE INSTRUCTIONS

Machine washable. Line dry in shade.
Do not bleach, soak or tumble dry.
Do not dry clean.



P400LS*
Womens
S/S Polo
8 - 24



P400MS
Mens
S/S Polo
S - 3XL, 5XL

*Limited colours available. See the full range of styles and colours available in the Biz Collection catalogue.



ZEN TUNIC

Biz Collection Zen tunic, with Teflon® stain release stretch fabric allows for easy care. Semi fitted style with side splits and long hemline.

FABRIC COMPOSITION 97% Polyester 3% Elastane



H134LS
Womens
Zen Tunic
6 - 20

BLISS TUNIC

Biz Collection Bliss tunic, with Teflon® stain release stretch fabric allows for easy care. Semi fitted style with deep side splits, longer length vented sleeves, 2 way zip with nickle free diamantè and 2 front pockets.

FABRIC COMPOSITION Black: 97% Polyester 3% Elastane
White: 70% Polyester 25% Rayon
5% Elastane



H632L
Womens
Bliss Tunic
6 - 20



EDEN TUNIC

Biz Collection Eden tunic, with Teflon® for easy care. Two lower front pockets, longer hem line, semi-fitted, side splits and center back action-back pleat.

FABRIC COMPOSITION 97% Polyester 3% Elastane



H133LS
Womens
Eden Tunic
6 - 20

SPA TUNIC

Biz Collection Spa tunic comes in a stretch fabric with linen-like appearance. Dupont™ Teflon® stain release function, asymmetrical mock-wrap front, with invisible centre back zip and deep side splits.

FABRIC COMPOSITION 97% Polyester 3% Elastane



H630L
Womens
Spa Tunic
6 - 20



KNITWEAR / OUTERWEAR



NAVY

CHARCOAL

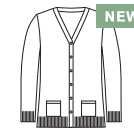
NEW
BLACK
CK962LC
ONLY

Designed for functional roles, Biz Care knits provide warmth, durability and a soft hand feel. With longer hem lengths to provide extra coverage.

FABRIC COMPOSITION
CARE INSTRUCTIONS

60% Acrylic 40% Merino Wool

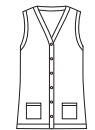
Warm gentle machine wash with wool approved detergent. Wash garment inside out with like colours. Do not bleach, soak, wring or tumble dry. Reshape and dry flat in shade. Cool iron using press cloth.



CK045LC
Womens Button
Front Knit Cardigan
XXS - 4XL



CK962LC
Womens Zip
Front S/S Knit
XXS - 4XL



CK961LV
Womens Button
Front Knit Vest
XXS - 4XL



NAVY

CHARCOAL

BLACK

2-WAY ZIP CARDIGAN

The perfect blend for those after a non-wool alternative. 2 way zip allows for multiple styling options.

FABRIC COMPOSITION

73% Viscose
27% Nylon

CARE INSTRUCTIONS

Machine washable.



LC3505
Womens 2 Way Zip Cardigan
S - 4XL



NAVY

CHARCOAL

BLACK

MILANO VEST

Easy care, 12-gauge wool blend knits are perfect for keeping you warm in the cooler climates or working in an air-conditioned environment.

FABRIC COMPOSITION

50% Pre-Shrunk Wool
50% Acrylic

CARE INSTRUCTIONS

Machine washable.



LV619L
Womens Milano Vest
XS - 3XL



WV619M
Mens Milano Vest
XS - 3XL, 5XL





NAVY
GRAPHITE

BLACK
GRAPHITE

GENEVA

Geneva Softshell jacket with breathable membrane offers wind and water repellent protection. Lined with ribbed fleece with lightweight warmth and comfort.



NAVY

BLACK

MICRO FLEECE

The essential micro-fleece jacket and vest range is low-pilling with 2 side zip pockets.



FABRIC COMPOSITION
BIZTECH™ 100% Polyester



J307L
Womens
Geneva Jacket
S - 2XL



J404L
Womens
Geneva Vest
S - 2XL



J307M
Mens
Geneva Jacket
S - 3XL, 5XL



J404M
Mens
Geneva Vest
S - 3XL, 5XL



FABRIC COMPOSITION
100% Polyester



PF631
Womens
Fleece Jacket
8 - 24



PF905
Womens
Fleece Vest
8 - 24



PF630
Mens
Fleece Jacket
XS - 3XL, 5XL

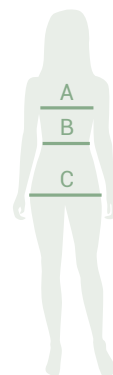


F233MN
Mens
Fleece Vest
XS - 3XL, 5XL

WOMENS SIZE GUIDE

Biz Care apparel sizes are designed to fit average industry standards for the below body measurements. Please use this handy Body Measurement Guide to compare your own measurements and help you determine which size to order.

Use these measurements as a guide when selecting the right size garment, but also take into consideration the garment fit.



A. BUST - Measure under your arms and across shoulder blades, around the fullest part of your bust.

B. WAIST - Measure around your natural waistline. This is the smallest part of your waist.

C. HIP - Measure around fullest part of your hips (about 20 - 24 cm down from waist) while standing naturally.

PANT AND SKIRT LENGTHS - Pants and skirts will vary in length depending on the height of each individual and also their shape. Most pants come with a hem allowance for easy alterations.

Women's Shirts, Scrub Tops, Knitwear and Outerwear

		XXS	XS	XS-S	S	M	L	L-XL	XL	2XL	3XL	4XL	5XL		
AU/NZ		4	6	8	10	12	14	16	18	20	22	24	26	28	30
Bust	cm	75-77	78-82	83-87	88-92	93-97	98-102	103-108	109-114	115-119	120-124	125-129	130-134	135-139	140-144
	in	29.5-30.3	30.7-32.3	32.6-34.2	34.6-36.2	36.6-38.2	38.6-40.2	40.6-42.5	43-44.9	45.3-46.9	47.2-48.8	49.2-50.8	51.2-52	53-54.7	55.1-56.7

Women's Pants, Scrub Pants and Skirts

		XXS	XS	XS-S	S	M	L	L-XL	XL	XL-2XL	2XL-3XL	3XL-4XL	4XL	5XL	
AU/NZ		4	6	8	10	12	14	16	18	20	22	24	26	28	30
Waist	cm	57-59	60-64	65-69	70-74	75-79	80-84	85-90	91-96	97-101	102-106	107-111	112-116	117-121	122-126
	in	22.4-23.2	23.6-25.2	25.6-27.2	27.5-29.1	29.5-31.1	31.5-33.1	33.5 - 35.4	35.8-37.8	38.1-39.8	40.2-41.7	42.1-43.7	44.1-45.7	46.1-47.6	48-49.6
Hip	cm	84-86	87-91	92-96	97-101	102-106	107-111	112-117	118-123	124-128	129-133	134-138	139-143	144-148	149-153
	in	33.1-33.9	34.2-35.8	36.2-37.8	38.1-39	40.1-41.7	42.1-43.7	44.1-46.1	46.5 -48.4	48.8-50.4	50.7-52.4	52.7-54.3	54.7-56.3	56.7-58.3	58.7-60.2

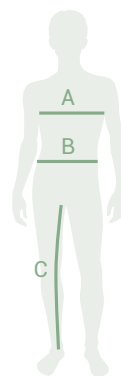
All measurements provided are approximate body measurements and for reference only. Actual sizing may vary according to the style and fit of the garment.

Not all styles are available in all sizes, please refer to product pages for available sizing.

MENS SIZE GUIDE

Biz Care apparel sizes are designed to fit average industry standards for the below body measurements. Please use this handy Body Measurement Guide to compare your own measurements and help you determine which size to order.

Use these measurements as a guide when selecting the right size garment, but also take into consideration the garment fit.



A. CHEST - Measure under your arms and across shoulder blades, around the fullest part of your chest. Hold one finger between body and tape.

B. WAIST - Measure around your natural waistline while holding one finger between body and tape. Measure over shirt at position your pants would normally sit.

C. IN SEAM - Measure from the crotch seam to the bottom of the inside leg of a well-fitting pair of pants.

PANT LENGTHS - Pants will vary in length depending on the height of each individual and also their shape. Most pants come with a hem allowance for easy alterations.

Men's Shirts, Polos, Knitwear and Outerwear

Chest	cm	87	92	97	102	107	112	117	122	127	132	137
	in	34	36	38	40	42	44	46	48	50	52	54
Shirts and Polos			XS	S	M	L	XL	2XL	3XL	4XL	5XL	
Knitwear and Outerwear			XS	S	M	L	XL	2XL	3XL	4XL	5XL	

Men's Scrub Tops and Lab Coat

Chest	cm	87	92	97	102	107	112	117	122	127	132	137
	in	34	36	38	40	42	44	46	48	50	52	54
Men's Scrub Tops			XS	S	M	L	XL	XL -2XL	3XL	4XL	5XL	
Unisex Scrub Tops			XS	S	M	L	XL	2XL	3XL		5XL	
Unisex Lab Coat			XS	S	M	L	XL	2XL	3XL		5XL	

Men's Pants, Shorts and Scrub Pants

Waist	cm	72	77	82	87	92	97	102	107	112	117	122	127
	in	28	30	32	34	36	38	40	42	44	46	48	50
Biz Care Comfort Waist Lowers		72	77	82	87	92	97	102	107	112	117	122	127
Men's Scrub Pants			XS	S	M	L	XL	2XL	3XL	4XL		5XL	
Unisex Scrub Pants			XS	S	M	L	XL	2XL	3XL		5XL		

This catalogue has been compiled and presented with due care and is considered to be true and correct at the time of publication. Colours are reproduced as closely as possible, but may differ slightly from actual products due to printing processes and paper composition. Please refer to www.biz-care.com for the latest up-to-date products and information.

bizcare

WWW.BIZ-CARE.COM

THANK YOU ♥ FOR CARING



PROUDLY PRINTED
IN AUSTRALIA

